

### MAJAL RALLY HELD AT AUDITORIUM

W. Donaghy, Congressman and Lewis Rhoton, Leader of the Last Thunder of the Campaign.

### MAGKEY ON RATE CASES

At a Public Hearing Against the Rate of the Railroad That Rates in Arkansas Are Unjust.

The Auditorium that was fairly well filled at the Democratic rally held last night at the Auditorium. The speakers at the rally were W. Donaghy, Congressman and Lewis Rhoton, leader of the last thunder of the campaign.

### NO TRUTH IN HEARST'S STORY, SAYS MR. BRYAN

Democratic Candidate Emphatically Asserts That He Speaks of Later's Rights in Maryland Today.

Underland, Md., Sept. 12.—(Special.)—Mr. Bryan today said that the story of his alleged visit to the Maryland State House was a fabrication.

### PREACHERS IN PARADE EGGED

Rev. Jas. S. Edensboro, Rev. J. A. Maples and Rev. L. L. Abbott Struck While in Probation Parade.

Several of the preachers who were in the parade today were egged by a mob of young men.

### UNITED STATES FLAG STRUCK

Justice Sanders Threatened to Prohibit—Eggs Thrown to Have Cross From Roof of Courtroom's Balcony.

The United States flag was struck today in the courtroom of the Federal court.

### WALK ON A WAGER

Illness City Man Declared to Win \$1000 on Last Five Years' Work.

A man who has been ill for five years has won a bet of \$1000 on his recovery.

### LIQUOR MEN'S PREDICTION

Two Lives Claimed Weekly Only by Only \$200.

Liquor men predict that the prohibition law will cost the government \$200 million annually.

### HUSBAND TOOK EARNINGS

In Plan of Mrs. Hand Fletcher in a Divorce Case.

### NEAR NEGRO MURDERER

Man Charged with Killing Negro in Arkansas.

### COTTON GINNERS FEAR NIGHT RIDER THREATS

Threats Made on Ginn in Mississippi Cause Fright in Ark. on Arbitration for Ginning.

### THRIVING TOWN NOW BUT MEMORY

Lewinburg Was One of Oldest Towns in Arkansas and Once Was Important Trading Post.

### NOW A PART OF MORRILTON

Remains Was Killed When the Little Rock and Fort Smith Railroad Was Built.

### WEATHER FORECAST

Generally Fair Sunday and Monday. Maximum temperature yesterday, 90, minimum, 66.

### WONEY GIVEN TO DEMOCRATIC FUND

The Gazette will give a Bryan button to each contributor of \$1 to the Gazette's National Campaign Fund.

### ORDERED TO GO INTO NEGRO COACH

Texas Women Allege They Were Treated as Negroes by Conductor on the T. and P. Railway.

### EACH SUE FOR \$10,000

Mrs. Ella Frederick and Miss Maudie Glenn Claim They Were Harassed and Abused by Train Official.

### GUNNEMEL, BLAMES HOLT

Intentional Postmaster Got Unfortunate Election Judges Appointed.

### IN GOOD ROADS PARADE

Five Cars on Fitting Down Main Street for Anniversary No. 10.

### MISSING MAN FOUND

F. E. Turpin Hunt From San Joaquin Held in London.

### ARKANSAS HAS 120 VOTES

Is Safe One Applicant for Teaching Position.

### A BABY IS BORN IN JAIL

Mother Is Wife of Man Who Is Charged With Rape.

### WALK ON A WAGER

Illness City Man Declared to Win \$1000 on Last Five Years' Work.

### LIQUOR MEN'S PREDICTION

Two Lives Claimed Weekly Only by Only \$200.

### HUSBAND TOOK EARNINGS

In Plan of Mrs. Hand Fletcher in a Divorce Case.

### NEAR NEGRO MURDERER

Man Charged with Killing Negro in Arkansas.

### WALK ON A WAGER

Illness City Man Declared to Win \$1000 on Last Five Years' Work.

### LIQUOR MEN'S PREDICTION

Two Lives Claimed Weekly Only by Only \$200.

### HUSBAND TOOK EARNINGS

In Plan of Mrs. Hand Fletcher in a Divorce Case.

### NEAR NEGRO MURDERER

Man Charged with Killing Negro in Arkansas.

### WALK ON A WAGER

Illness City Man Declared to Win \$1000 on Last Five Years' Work.

### LIQUOR MEN'S PREDICTION

Two Lives Claimed Weekly Only by Only \$200.

### HUSBAND TOOK EARNINGS

In Plan of Mrs. Hand Fletcher in a Divorce Case.

### NEAR NEGRO MURDERER

Man Charged with Killing Negro in Arkansas.

### WALK ON A WAGER

Illness City Man Declared to Win \$1000 on Last Five Years' Work.

### LIQUOR MEN'S PREDICTION

Two Lives Claimed Weekly Only by Only \$200.

### HUSBAND TOOK EARNINGS

In Plan of Mrs. Hand Fletcher in a Divorce Case.

### NEAR NEGRO MURDERER

Man Charged with Killing Negro in Arkansas.



The Gazette will give a Bryan button to each contributor of \$1 to the Gazette's National Campaign Fund.

W. L. Donaghy	1.00
J. A. Maples	1.00
L. L. Abbott	1.00
...	...

### FARMER'S BODY IN RIVER

Remains of a farmer were found floating in the Arkansas River.

### HEAVY RAIN AT GATHERING

Heavy rain fell during a gathering in the city.

### WALK ON A WAGER

Illness City Man Declared to Win \$1000 on Last Five Years' Work.

### LIQUOR MEN'S PREDICTION

Two Lives Claimed Weekly Only by Only \$200.

### HUSBAND TOOK EARNINGS

In Plan of Mrs. Hand Fletcher in a Divorce Case.

### NEAR NEGRO MURDERER

Man Charged with Killing Negro in Arkansas.

### WALK ON A WAGER

Illness City Man Declared to Win \$1000 on Last Five Years' Work.

### LIQUOR MEN'S PREDICTION

Two Lives Claimed Weekly Only by Only \$200.

### HUSBAND TOOK EARNINGS

In Plan of Mrs. Hand Fletcher in a Divorce Case.

### WALK ON A WAGER

Illness City Man Declared to Win \$1000 on Last Five Years' Work.

### LIQUOR MEN'S PREDICTION

Two Lives Claimed Weekly Only by Only \$200.

### HUSBAND TOOK EARNINGS

In Plan of Mrs. Hand Fletcher in a Divorce Case.

### NEAR NEGRO MURDERER

Man Charged with Killing Negro in Arkansas.

### WALK ON A WAGER

Illness City Man Declared to Win \$1000 on Last Five Years' Work.

### LIQUOR MEN'S PREDICTION

Two Lives Claimed Weekly Only by Only \$200.

### HUSBAND TOOK EARNINGS

In Plan of Mrs. Hand Fletcher in a Divorce Case.

### NEAR NEGRO MURDERER

Man Charged with Killing Negro in Arkansas.

### WALK ON A WAGER

Illness City Man Declared to Win \$1000 on Last Five Years' Work.

### LIQUOR MEN'S PREDICTION

Two Lives Claimed Weekly Only by Only \$200.

### HUSBAND TOOK EARNINGS

In Plan of Mrs. Hand Fletcher in a Divorce Case.

### NEAR NEGRO MURDERER

Man Charged with Killing Negro in Arkansas.

### WALK ON A WAGER

Illness City Man Declared to Win \$1000 on Last Five Years' Work.

### LIQUOR MEN'S PREDICTION

Two Lives Claimed Weekly Only by Only \$200.

## The Arkansas Gazette's Fine New Home

One of the Finest and Best Equipped  
Newspaper Offices in the South, and  
the Handsomest Press Room  
in the Country.

### MAKING OF A NEWSPAPER

It is a fact from the little log cabin which the first issue of the Arkansas Gazette was published at Arkansas Post in 1818, to the magnificent new building, which is now occupied by the Gazette, the editor, which was the first issue of the Gazette, contained ten copies, the largest of which was about 15 by 16 feet. The new quarters of the Gazette occupy three floors with a total floor space of about 11,000 square feet. On each of the three floors the Gazette occupies a space of about 3,500 feet.

The new quarters of the Gazette occupy a large part of the new Gazette building, which has been erected by Ed. Perry Hester on the southeast corner of Third and Louisiana streets. The building has a frontage of 140 feet on Third street and 130 feet on Louisiana street, occupying an entire quarter of a block.

The Gazette occupies the greater part of the eastern half of the building, with the exception of the third floor. It is very particular the new offices of the Gazette are believed to be the equal if not the superior of any newspaper office in the South. This was made possible by the fact that the building was designed and the office arranged equally for the use of the Gazette and the plan were drawn with a view to making this the most modern and complete newspaper plant in the South.

The entrance to the Gazette's quarters is located on Third street at the southeast corner of the building. The entrance opens into a vestibule from which one may pass either to the basement floor or the first floor, or the editorial room on the second floor.

Two of the most attractive features of the new quarters is the press room, which is located on the second floor of the building, and is, in fact, the largest of its kind in the country. The press room is 72 feet long and 20 feet wide and extends up through the basement and the second story. This arrangement, by giving a room within the ordinary height, makes the room exceedingly bright and airy, but gives an excellent view of the press and other equipment of the plant from the sidewalk. The new quarters which form the first floor windows which form the front of the press room at all hours of the day indicate that this arrangement is appreciated. A view of the press room is also obtained from the basement floor, from which it is separated by a single glass partition.

In the center of the press room is the new four-color line press which was installed by the Gazette when the new quarters were occupied. The installation of the printing press in a building which is so large and modern is a feat which has not been accomplished by any other newspaper in the South. The press is a four-color line press, capable of printing 12, 16 or 24 page papers, and is the largest of its kind in the South. The capacity of the new press is 12,000 16-page papers, or 24,000 24-page papers, or 36,000 32-page papers, per hour.

In the rear of the press room is the new linotype department, which was purchased by the Gazette when the new quarters were occupied. The linotype department is a complete one, and is the largest of its kind in the South. It is equipped with all the latest machinery, and is capable of setting and composing 24 columns of type at a time. The linotype department is a complete one, and is the largest of its kind in the South.

The new quarters of the Gazette are a complete one, and are the most modern and complete newspaper plant in the South. They are equipped with all the latest machinery, and are capable of printing 24 columns of type at a time. The new quarters of the Gazette are a complete one, and are the most modern and complete newspaper plant in the South.

### THE COTTON BELT ROUTE

Their Office in the New Gazette Building—They Are Growing.

The office of the Arkansas Freight and Express Company (Cotton Belt Route) will be located in the new quarters of the Arkansas Gazette, during the month of September, the Cotton Belt Route has announced.

The new quarters of the Arkansas Freight and Express Company (Cotton Belt Route) will be located in the new quarters of the Arkansas Gazette, during the month of September, the Cotton Belt Route has announced.

The new quarters of the Arkansas Freight and Express Company (Cotton Belt Route) will be located in the new quarters of the Arkansas Gazette, during the month of September, the Cotton Belt Route has announced.

The new quarters of the Arkansas Freight and Express Company (Cotton Belt Route) will be located in the new quarters of the Arkansas Gazette, during the month of September, the Cotton Belt Route has announced.

The new quarters of the Arkansas Freight and Express Company (Cotton Belt Route) will be located in the new quarters of the Arkansas Gazette, during the month of September, the Cotton Belt Route has announced.

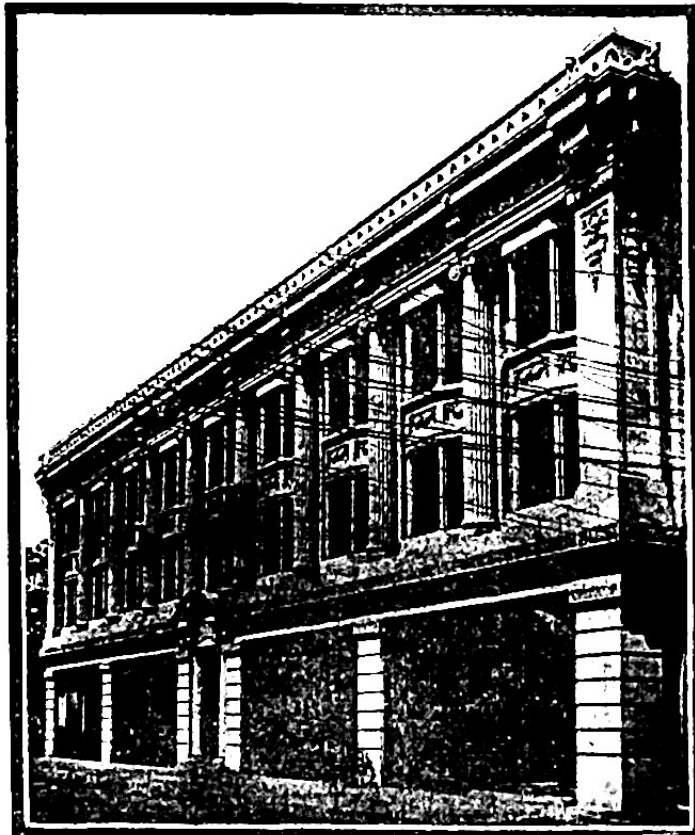
The new quarters of the Arkansas Freight and Express Company (Cotton Belt Route) will be located in the new quarters of the Arkansas Gazette, during the month of September, the Cotton Belt Route has announced.

The new quarters of the Arkansas Freight and Express Company (Cotton Belt Route) will be located in the new quarters of the Arkansas Gazette, during the month of September, the Cotton Belt Route has announced.

The new quarters of the Arkansas Freight and Express Company (Cotton Belt Route) will be located in the new quarters of the Arkansas Gazette, during the month of September, the Cotton Belt Route has announced.

The new quarters of the Arkansas Freight and Express Company (Cotton Belt Route) will be located in the new quarters of the Arkansas Gazette, during the month of September, the Cotton Belt Route has announced.

The new quarters of the Arkansas Freight and Express Company (Cotton Belt Route) will be located in the new quarters of the Arkansas Gazette, during the month of September, the Cotton Belt Route has announced.



The Gazette Building, West Third Street Entrance

Charge of freight traffic in Arkansas and Louisiana, including freight agents, and L. B. Miller, freight agent, with F. R. Chandler, chief clerk, in charge of the rate department, and P. S. Overton, in charge of the telegram department. All of these gentlemen have been in the service a number of years and are well known locally.

The officials of the company, outside of those located at Little Rock, have offices in the extreme end of the state, as follows, with headquarters at St. Louis, Mo.:

F. H. Britton, vice president and general manager.  
C. W. Wilson, assistant general manager.  
H. E. Parrot, freight traffic manager.  
J. P. Park, general freight agent.  
J. J. Watson, assistant general freight agent.  
R. W. Le Broom, general passenger agent.  
E. H. Loring, assistant general passenger agent.  
R. F. White, assistant attorney.  
J. W. Maxwell, general superintendent.

at Tyler, Tex., and E. A. Park, superintendent, at Pine Bluff, are also well known officials.

The building plant in the new quarters was installed by M. R. Hester, 207 Main street. It is a really up-to-date in every detail, and the office work will be done about this line structure, will have the closest scrutiny by any expert without the slightest

### The Healing Plant

The healing plant in the new quarters building was installed by M. R. Hester, 207 Main street. It is a really up-to-date in every detail, and the office work will be done about this line structure, will have the closest scrutiny by any expert without the slightest

any being discovered in any part of the work.

Mr. Hester, who has conducted a plumbing and heating plant in this city for many years, and has installed this in one of the largest buildings, has the reputation of carrying out care and determination in the selection of material and the employment of experts in every branch of his business that has made him unusually successful. The rate of the house is to make every job speak for itself, and the quality of the work is one of the very latest and best.

### THE NEW GAZETTE OFFICE BUILDING

A Magnificent Structure That in Artistic Design Will Compare With Great Buildings of Larger Cities.

#### IS ABSOLUTELY FIRE-PROOF

Walls Are Capable of Sustaining a Structure Four Times as High as the Present One.

For the past few years buildings have been erected and built in Little Rock with a regularity that never before ago was known in any other city. The new Gazette building, and what they call it, is a new structure that is absolutely fire-proof.

A structure that is absolutely fire-proof is a new structure that is absolutely fire-proof. It is a new structure that is absolutely fire-proof. It is a new structure that is absolutely fire-proof.

A structure that is absolutely fire-proof is a new structure that is absolutely fire-proof. It is a new structure that is absolutely fire-proof. It is a new structure that is absolutely fire-proof.

A structure that is absolutely fire-proof is a new structure that is absolutely fire-proof. It is a new structure that is absolutely fire-proof. It is a new structure that is absolutely fire-proof.

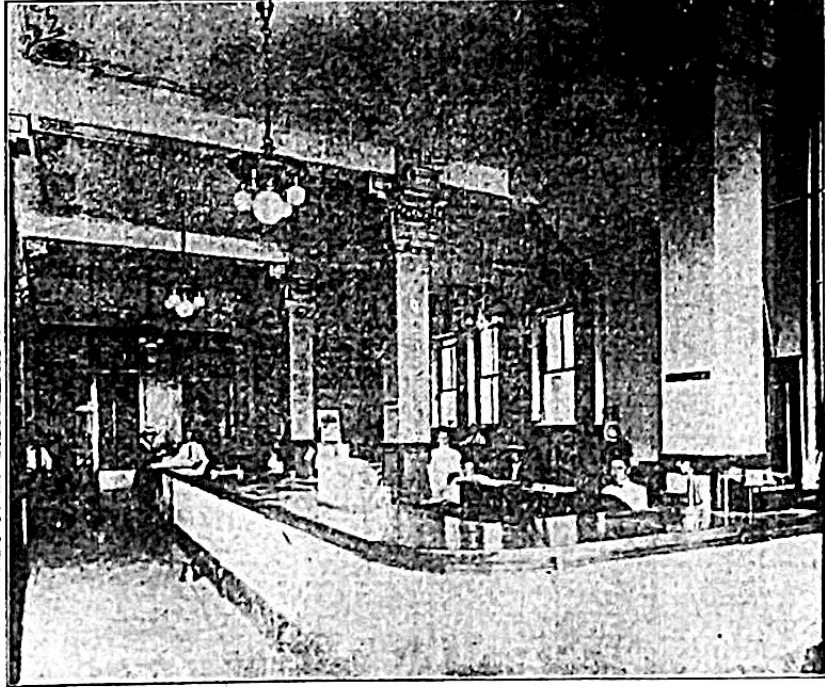
A structure that is absolutely fire-proof is a new structure that is absolutely fire-proof. It is a new structure that is absolutely fire-proof. It is a new structure that is absolutely fire-proof.

A structure that is absolutely fire-proof is a new structure that is absolutely fire-proof. It is a new structure that is absolutely fire-proof. It is a new structure that is absolutely fire-proof.

A structure that is absolutely fire-proof is a new structure that is absolutely fire-proof. It is a new structure that is absolutely fire-proof. It is a new structure that is absolutely fire-proof.

A structure that is absolutely fire-proof is a new structure that is absolutely fire-proof. It is a new structure that is absolutely fire-proof. It is a new structure that is absolutely fire-proof.

A structure that is absolutely fire-proof is a new structure that is absolutely fire-proof. It is a new structure that is absolutely fire-proof. It is a new structure that is absolutely fire-proof.



View of the Gazette Business Office

Several times during the past few years the owners of the lot on which the building has been erected have had opportunities presented to them to build a portion of the property. These opportunities were all turned down, and it was only when the new quarters of the Gazette were installed that the new quarters of the Gazette were installed.

The new quarters of the Gazette are a complete one, and are the most modern and complete newspaper plant in the South. They are equipped with all the latest machinery, and are capable of printing 24 columns of type at a time. The new quarters of the Gazette are a complete one, and are the most modern and complete newspaper plant in the South.

The new quarters of the Gazette are a complete one, and are the most modern and complete newspaper plant in the South. They are equipped with all the latest machinery, and are capable of printing 24 columns of type at a time. The new quarters of the Gazette are a complete one, and are the most modern and complete newspaper plant in the South.

The new quarters of the Gazette are a complete one, and are the most modern and complete newspaper plant in the South. They are equipped with all the latest machinery, and are capable of printing 24 columns of type at a time. The new quarters of the Gazette are a complete one, and are the most modern and complete newspaper plant in the South.

The new quarters of the Gazette are a complete one, and are the most modern and complete newspaper plant in the South. They are equipped with all the latest machinery, and are capable of printing 24 columns of type at a time. The new quarters of the Gazette are a complete one, and are the most modern and complete newspaper plant in the South.

The new quarters of the Gazette are a complete one, and are the most modern and complete newspaper plant in the South. They are equipped with all the latest machinery, and are capable of printing 24 columns of type at a time. The new quarters of the Gazette are a complete one, and are the most modern and complete newspaper plant in the South.

The new quarters of the Gazette are a complete one, and are the most modern and complete newspaper plant in the South. They are equipped with all the latest machinery, and are capable of printing 24 columns of type at a time. The new quarters of the Gazette are a complete one, and are the most modern and complete newspaper plant in the South.

The new quarters of the Gazette are a complete one, and are the most modern and complete newspaper plant in the South. They are equipped with all the latest machinery, and are capable of printing 24 columns of type at a time. The new quarters of the Gazette are a complete one, and are the most modern and complete newspaper plant in the South.

The new quarters of the Gazette are a complete one, and are the most modern and complete newspaper plant in the South. They are equipped with all the latest machinery, and are capable of printing 24 columns of type at a time. The new quarters of the Gazette are a complete one, and are the most modern and complete newspaper plant in the South.